

*Go out to  
the whole world;  
proclaim the  
**Good News**  
to all creation.*

MARK 16:15



**THE  
ARCHBISHOP'S  
CAMPAIGN  
2025**

# Procedures Manual

A manual for parish priests and staff providing guidance and resources  
for the implementation of the 2025 Archbishop's Campaign

[melbournecatholic.org/archbishopscampaign](http://melbournecatholic.org/archbishopscampaign)

# A message from the Archbishop

Dear Parish Priests, Parish Administrators, Staff, and Volunteers,

My prayerful greetings to you in the Lord.



Last year in August 2024, the Archbishop's Campaign was launched in Parishes. The response from our faithful was overwhelmingly positive and I wanted to express my gratitude for your help during the campaign.

Through the generosity of our parishes we were able to significantly boost the collection values for our key beneficiaries. The campaign also invited recurring donations which has been instrumental in establishing long-term support for the works of the Church in Melbourne.

This year, I again invite you and your parish to help with the **Archbishop's Campaign**. Your support with communicating the campaign and implementing its process is invaluable.

The generosity of your parish will fund vital ministries and key projects of the Church in Melbourne.

The main collection weekend for this year's campaign will be the weekend of 23-24 August. The way in which the Campaign will work, with instructions and information, is set out in this *Procedures Manual*. As was the case last year, donors will be able to make either a tax-deductible or non-deductible gift.

Tax-deductible gifts will go to the Archbishop's Charitable Fund, which supports:

- Corpus Christi College Building Fund
- Priests Retirement Foundation
- University of Divinity Building Fund
- John Pierce Centre
- Melbourne Overseas Mission
- other deductible gift recipient entities such as Catholic community agencies and community service organisations.

Non-deductible gifts will go to the Catholic Archdiocese of Melbourne Religious Projects Fund, which supports:

- the Archbishop's evangelisation initiatives, such as Australian Catholic Youth Festival.
- seminarian education.

By joining together and supporting the fundraising effort within our Archdiocese we are responding to Christ's invitation to "go out to all the world and spread the Good News." Through our participation we are helping to build our community of faith in Jesus Christ.

Thank you for responding so generously with your time and efforts. By inviting your parishioners to help raise funds to support the important works of the Church in Melbourne you are playing a pivotal role in our future.

May the good Lord bless you in your commitment and continued faithfulness to the mission he has entrusted to us all.

With every grace and blessing,  
Yours sincerely in Christ Jesus,



Most Rev Peter A Comensoli

## ENQUIRIES

For general enquiries, please contact:  
**archbishopsfund@cam.org.au**  
**9926 5686**

Or to contact the coordinator of the Archbishop's Campaign: Llewly Berchy  
**llewly.berchy@cam.org.au**



# Contents

<b>Campaign overview .....</b>	<b>04</b>
<i>What are we doing and why? .....</i>	<i>04</i>
<i>Who will the monies be going to? .....</i>	<i>04</i>
<i>When will it happen and how will it work? .....</i>	<i>05</i>
<i>Where can I get campaign materials and resources? .....</i>	<i>05</i>
<b>Campaign process .....</b>	<b>06</b>
<i>Getting ready for the campaign .....</i>	<i>06</i>
<i>Roles for volunteers .....</i>	<i>06</i>
<i>How do my parishioners donate? .....</i>	<i>06</i>
<i>Parish processing information .....</i>	<i>07</i>
<b>Campaign timeline - Implementation program .....</b>	<b>08</b>
<b>Appendices .....</b>	<b>10</b>
<i>Appendix 1 - Frequently asked questions .....</i>	<i>10</i>
<i>Appendix 2 - List of resources, supplies and campaign materials .....</i>	<i>12</i>
<i>Appendix 3 - Archbishop's Campaign remittance form for parishes .....</i>	<i>13</i>
<i>Appendix 4 - Priests' talking points .....</i>	<i>13</i>
<i>Appendix 5 - Altar notices .....</i>	<i>14</i>
<i>Appendix 6 - Prayer of the faithful .....</i>	<i>15</i>
<i>Appendix 7 - Bulletin notes .....</i>	<i>15</i>
<i>Appendix 8 - ParishID codes .....</i>	<i>16</i>



Please ensure you watch the instructional video, as it explains the correct process.

Find the video at  
[melbournecatholic.org/proceduresvideo](https://melbournecatholic.org/proceduresvideo)  
 or scan the QR code.



# Campaign overview

## WHAT ARE WE DOING AND WHY?

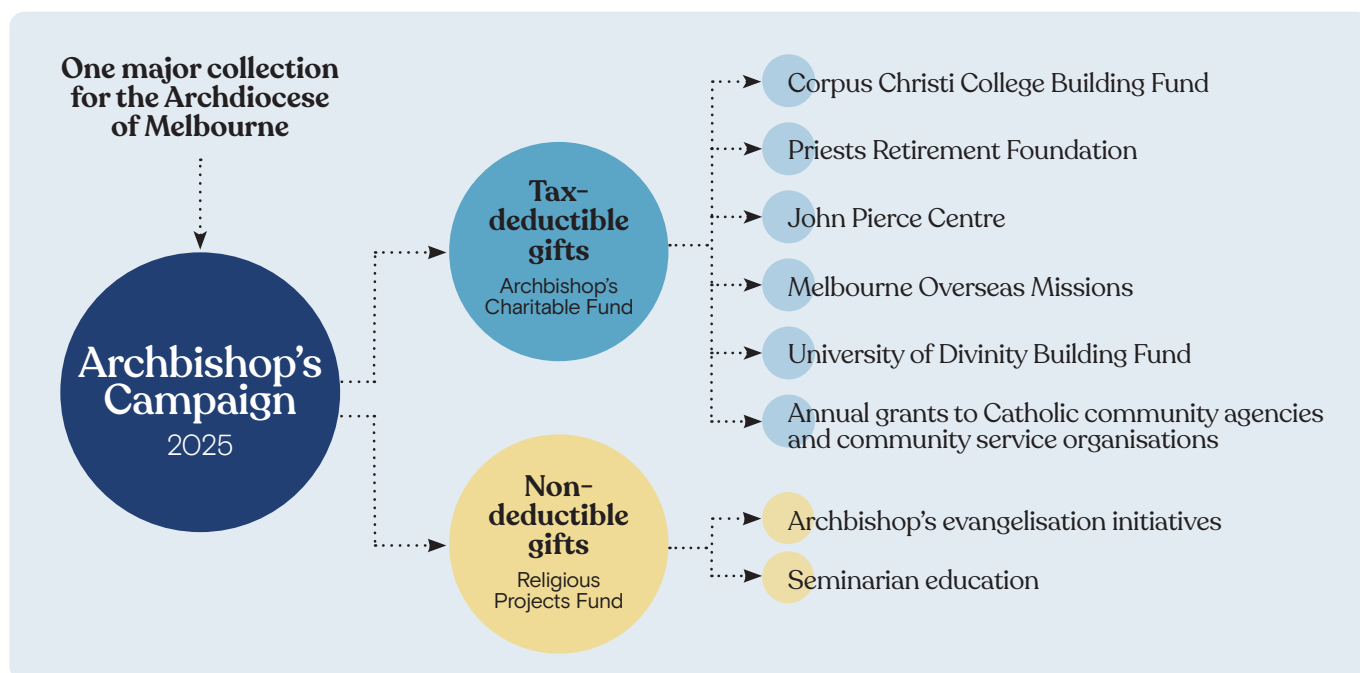
In 2024, the Archdiocesan Development Office introduced a streamlined approach to fundraising. This approach, called the Archbishop's Campaign, is a single annual campaign and reduces the number of separate special Sunday plate collections in parishes each year. The Campaign supports key Archdiocesan ministries and reduces the number of times parishioners are asked to give each year.

## WHO WILL THE MONIES BE GOING TO?

A key focus for the Archbishop's Campaign is supporting the formation of new priests and caring for our retired priests. Money will also support other key ministries of the Church as outlined below.

**Tax-deductible donations** go to the Archbishop's Charitable Fund, which supports the Corpus Christi College Building Fund, Priests Retirement Foundation, John Pierce Centre, Melbourne Overseas Mission, the University of Divinity Building Fund and other deductible gift recipient entities such as Catholic community agencies and service organisations.

**Non-deductible donations** go to the Catholic Archdiocese of Melbourne Religious Projects Fund, which supports seminarian formation and evangelisation initiatives such as the Australian Catholic Youth Festival and World Youth Day. Any unallocated and loose collections will go to the Catholic Archdiocese of Melbourne Religious Projects Fund.



## WHEN WILL IT HAPPEN AND HOW WILL IT WORK?

The Archbishop's Campaign will run over three weekends in August:

- **9–10 August**  
Archbishop's Campaign is flagged in an altar notice.
- **16–17 August**  
The campaign is officially announced to parishioners.
- **23–24 August (Giving Weekend)**  
Parishioners will be asked during Mass to offer a gift to the Archbishop's Campaign.
- **30–31 August (Follow-up Weekend)**  
Parishioners will be reminded to finalise their contributions.

Parishioners across the Archdiocese will be asked to make a recurring monthly contribution, although one-off donations will also be accepted. Donors can choose whether they wish to make their gift tax-deductible. Donations of \$2 or more to the Archbishop's Charitable Fund are tax-deductible. All other gifts, including unallocated gifts and loose collections, will be non-deductible and go to Catholic Archdiocese of Melbourne Religious Projects Fund.

## WHERE CAN I GET CAMPAIGN MATERIALS AND RESOURCES?

Hard-copy campaign materials are provided along with this *Procedures Manual*. Resources to support the implementation of the campaign are included in the appendices to this manual.

Additional campaign materials can be requested by emailing [archbishopsfund@cam.org.au](mailto:archbishopsfund@cam.org.au).



Digital resources are available at [melbournecatholic.org.au/archbishops-campaign-resources](https://melbournecatholic.org.au/archbishops-campaign-resources)

# Campaign process

## GETTING READY FOR THE CAMPAIGN

A team of volunteers will be needed for the three campaign weekends. Volunteers will need to read through this manual and understand the campaign process prior to the first weekend of the campaign (16-17 August).

## ROLES FOR VOLUNTEERS

- Distribute envelopes with tear-off pledge cards, pencils and brochures on pews on campaign weekends.
- Display posters in prominent areas of the church foyer.
- Conduct special collections for the Archbishop's Campaign at Masses on:
  - Giving Weekend (23-24 August) and
  - Follow-up Weekend (30-31 August).
- Promote the Archbishop's Campaign at entry points of the church on the Giving Weekend and Follow-up Weekend.
- Safeguard any collections made.

## HOW DO MY PARISHIONERS DONATE?

- **Online** with a credit card: directly through the website or via the QR code found on campaign brochures, posters and the tear-off pledge cards on campaign envelopes.
- **Using tear-off pledge cards:** credit card, cash, cheque donations accepted. Cheques are payable to '**The Archbishop's Campaign**'. Parishioners can drop campaign envelopes containing their completed tear-off pledge cards into the special Archbishop's Campaign collection on Giving Weekend and Follow-up Weekend, or post them directly, using the return-paid envelope provided, to:
 

Archbishop's Campaign  
PO BOX 146, East Melbourne 8002
- **Via anonymous loose cash donations:** Loose anonymous cash donations can be placed directly into collection plate on the Giving Weekend and Follow-up Weekend. Parishes bank this money according to processing instructions on the following page.

## PARISH PROCESSING INFORMATION

Receipting of gifts will be organised by the Archdiocese of Melbourne. Loose collections are considered anonymous and will not receive a receipt.



After each campaign weekend, place any campaign envelopes into the supplied cash bags. **Do not open the campaign envelopes.** Store bags in a secure location.



Store any loose collections separately as these will be banked by you (instructions below—Step 4).



After the campaign, seal the cash bags containing the campaign envelopes with the supplied numbered clip seal. **Please do not place any loose collections in these bags.** The Archdiocese will pick up your sealed bag in September during business hours. The exact date will be communicated closer to the time.



After the campaign, parishes count any **loose cash donations** and deposit to the Roman Catholic Trust Corporation Account. Parishes immediately complete the remittance form (Appendix 3) and email it to: [archbishopsfund@cam.org.au](mailto:archbishopsfund@cam.org.au).

**Account name:** RCTC MAIN ACCOUNT  
**BSB:** 083-091

**Account number:** 515143414

**Reference:** AC25PARISHID  
(Parish ID codes located in Appendix 8)

# Campaign timeline

## Implementation program

### 28 Jul

- Parishes receive all campaign materials.
- Check for ample supplies. See 'Resource items' in Appendix.
- Email [archbishopsfund@cam.org.au](mailto:archbishopsfund@cam.org.au) if you need more items.
- Organise a team of volunteers to help and ask them to read this *Procedures Manual*.
- Scan the QR code to watch the instructional video or visit [melbournecatholic.org/proceduresvideo](http://melbournecatholic.org/proceduresvideo)



### 9–10 Aug

- Make announcement, using Altar Notice #1 (see page 18) at the end of each weekend Mass (volunteer or priest).
- Prepare to use the Prayer of the Faithful and Bulletin Note and display campaign posters around parish.
- Priests are encouraged to use Priests' Talking Points for following weekend Masses.
- Display digital banner on parish website (for duration of campaign). This will be arranged for those parishes using PACEM websites. For parishes that do not have a PACEM website, the banner will be available for download on the campaign website.
- Share social media tiles on parish social media accounts, available from the campaign website.



## ANNOUNCEMENT WEEKEND

# 16–17 Aug

- Distribute envelopes with tear-off pledge cards, pencils and brochures, placing them on pews.
- Priest promotes the campaign using Priests' Talking Points.
- Include the Bulletin Note in the parish newsletter and Prayer of the Faithful during Mass.
- For weekday Mass-goers, place some campaign brochures and envelopes with tear-off pledge cards in the foyer.
- Securely store any early pledges in the parish office.

## GIVING WEEKEND

# 23–24 Aug

- Distribute envelopes with tear-off pledge cards, pencils and brochures, placing them on pews.
- Volunteers promote the campaign at entry points of the church.
- Priest promotes the campaign using Priests' Talking Points.
- Conduct a special collection for the campaign after the priest's homily.
- Securely store pledges in the parish office.
- Continue to leave some campaign brochures, envelopes with tear-off pledge cards, and pencils in the foyer for weekday Mass-goers.

## FOLLOW-UP WEEKEND

# 30–31 Aug

- Distribute envelopes with tear-off pledge cards, pencils, and brochures, placing them on pews.
- During the homily, the priest encourages parishioners to finalise their commitment.
- Use Altar Notice #2 **at the end** of each weekend Mass (volunteer or priest).
- Conduct a special collection for the campaign after the priest's homily.
- Process pledges by following the campaign process outlined above—remittance form found in Appendix 3.
- Share social media 'thank you' tile on parish social media accounts, with a final opportunity to pledge or give.

# Appendix 1

## Frequently asked questions

These frequently asked questions (FAQs) will help answer questions parishioners may have about the 2025 Archbishop's Campaign.

### WHY IS THE ARCHDIOCESE ADOPTING THIS APPROACH TO COLLECTIONS?

The Archdiocese is doing this to support key Archdiocesan ministries in a streamlined way, reducing the number of times parishioners are asked to give each year and the number of times parish priests and staff are asked to collect donations.

### HOW CAN I MAKE A GIFT?

Gifts can be made by completing an online form or by completing the tear-off pledge card attached to the campaign envelopes available at your parish, and placing it, along with your credit card, cash or cheque donation, into the collection plate on campaign weekends or posting it to:

**Archbishop's Campaign  
PO Box 146  
East Melbourne VIC, 8002**

Please make cheques payable to 'The Archbishop's Campaign'.

### DO I HAVE TO MAKE A RECURRING DONATION, OR WILL ONE-OFF DONATIONS ALSO BE ACCEPTED?

One-off cash and cheque donations, as well as recurring payments by credit card, will be accepted. Please make cheques payable to 'The Archbishop's Campaign'.

### WHY DO ONLINE DONATIONS HAVE TO BE BY CREDIT CARD?

Our fundraising platform is not currently set up to process direct-debit transactions. We are working to address this.

### CAN I SET UP A DIRECT DEBIT FROM MY NOMINATED BANK ACCOUNT RATHER THAN A RECURRING CREDIT CARD PAYMENT?

For those who are unable to proceed with a recurring credit card payment, we can set up a bank transfer arrangement outside our fundraising platform. To arrange this, please contact the fundraising office at: [archbishopsfund@cam.org.au](mailto:archbishopsfund@cam.org.au).

### WHY AM I BEING ASKED WHETHER I WANT TO MAKE A TAX-DEDUCTIBLE GIFT?

Some activities of the Catholic Archdiocese of Melbourne are conducted by entities that have deductible gift recipient (DGR) status from the Australian Taxation Office. Others, such as seminarian education and evangelisation, are not. By giving people the option of making a non-deductible gift, the Archbishop's Campaign is able to support a broader range of the vital ministries within the Archdiocese.

### HOW DO I CHOOSE TO MAKE A NON-DEDUCTIBLE GIFT?

When completing a pledge card (either on paper or online), donors will be prompted to indicate whether they wish to make a tax-deductible donation. For online pledges, if you wish to make a non-deductible donation, choose the button for non-deductible donations and complete the online form. For those completing hard-copy pledge cards, simply do not mark the box asking whether you wish to make a tax-deductible donation.

### HOW WILL A NON-DEDUCTIBLE DONATION HELP THE ARCHBISHOP'S CAMPAIGN?

The Archdiocese encourages those donors who do not require a tax deduction for their gift to consider making a non-deductible donation. This enables the Archdiocese to support vital ministries that are not designated gift recipients but that provide much needed activities such as evangelisation initiatives and seminarian education.

### CAN I CHANGE MY MIND ABOUT WHETHER MY GIFT IS DEDUCTIBLE?

Donors making a recurring gift can change the tax status of their gift (tax deductible/non-deductible) by emailing the Catholic Archdiocese of Melbourne at [archbishopsfund@cam.org.au](mailto:archbishopsfund@cam.org.au).

### WHEN WILL I RECEIVE MY RECEIPT?

Receipts will be emailed to all donors making donations of \$2 or more who provide an email address, regardless of whether they are making a tax-deductible donation. Receipts will be issued as payments are processed. Donors who do not have an email address can provide a postal address to which their receipt can be sent.

### WHAT WILL MY GIFT BE USED FOR?

Tax-deductible donations will go to the Archbishop's Charitable Fund. The Archbishop's Charitable Fund supports:

- University of Divinity Building Fund, which in turn funds the Catholic Theological College
- Corpus Christi College Building Fund
- Priests Retirement Foundation Archdiocese of Melbourne
- John Pierce Centre, which supports the Deaf community
- Melbourne Overseas Mission
- Catholic community agencies and community service organisations, through an annual grants program.

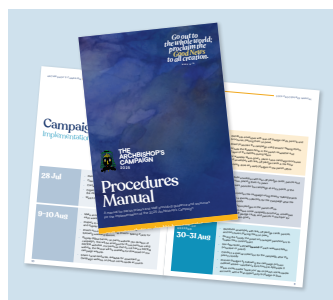
Non-deductible gifts will go to the Catholic Archdiocese of Melbourne Religious Projects Fund, which supports:

- the Archbishop's evangelisation initiatives, such as Australian Catholic Youth Festival and World Youth Day, and
- seminarian education.

# Appendix 2

## List of resources, supplies and campaign materials

### HARD COPY—BY POST/COURIER



Campaign Procedures Manual



Campaign posters



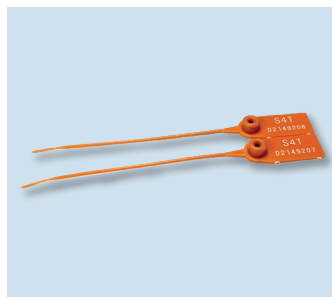
Campaign envelopes with tear-off pledge cards



Campaign brochures



1 larger secure mail bag

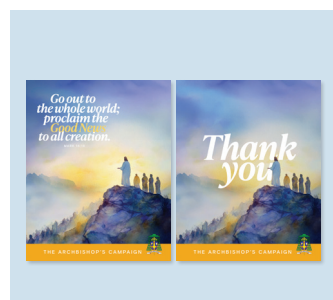


Numbered clip seal



Pencils

### DIGITAL—FOR DOWNLOAD FROM THE CAMPAIGN WEBSITE



Social media tiles: 'Donate' and 'Thank you'



Digital banner for website



Video for sharing on social media



Bulletin graphic

If you don't have enough of any of these resources, please email [archbishopsfund@cam.org.au](mailto:archbishopsfund@cam.org.au).



Digital resources are available at [melbournecatholic.org.au/archbishops-campaign-resources](http://melbournecatholic.org.au/archbishops-campaign-resources)



# Appendix 3

## Archbishop's Campaign remittance form for parishes

### 1. LOOSE COLLECTIONS

Please use the following account details to bank any loose cash collections:

**Account name:** RCTC MAIN ACCOUNT

**BSB:** 083-091.

**Account number:** 515143414

**Reference:** AC25

Immediately after making this transfer, please email the following details to [archbishopsfund@cam.org.au](mailto:archbishopsfund@cam.org.au).

- Name of your parish
- Suburb of your parish
- Parish ID
- Total amount electronically transferred
- Date of transfer
- Total \$ transferred

### 2. PARISHIONER'S PLEDGES—E.G. DONOR ENVELOPES

After each campaign weekend, place any campaign envelopes into the supplied mail bag and store in a secure location. **Please do not open the campaign envelopes.** After the campaign ends, seal the mail bag with supplied numbered clip seal. Please write your parish on the sticker on the bag. **Please do not place any loose collections in these bags.** Loose collections will be banked by you to the RCTC account.

The Archdiocese will pick up your sealed bag in September during business hours. Advice about the exact date will be communicated closer to this time.

# Appendix 4

## Priests' talking points

These talking points are a guide for priests to help promote the campaign.

- This campaign, called the Archbishop's Campaign, will support the vital ministries that serve all in our Archdiocese. It will run over three weekends each August and the first weekend is this weekend.
- The campaign isn't a 'special' collection like those of the past, but rather an annual campaign to fund seminarian education and the priest's retirement foundation as well as other Catholic mission areas.
- You will have seen posters and brochures with QR codes around the foyer and in the pews. The brochure in your pew explains how this campaign will work, which ministries it is able to support and how you can contribute.
- The focus of this year's campaign is on seminarian formation and gratitude for the lifelong contribution and ministry of our retired priests.
- Right now, there are 30 seminarians preparing for priestly service in our Archdiocese. We are very blessed to have had seven enter the seminary this year alone. The Archbishop's Campaign is also an opportunity to show our gratitude for the vocations of our retired priests, who have dedicated their whole lives to serving the people of God.
- In this campaign, we invite you to make a gift and where possible, a monthly recurring gift. You can do this by completing the tear-off pledge card attached to the campaign envelope in your pew. While online gifts are preferred, gifts by way of writing down your credit card details, cash and cheques are also possible.



A Word doc file is available at [melbournecatholic.org.au/archbishops-campaign-resources](http://melbournecatholic.org.au/archbishops-campaign-resources)

## Appendix 4 (Cont.)

- You can choose either to make a tax-deductible donation or to make a non-deductible gift by leaving the box unchecked.
- Tax-deductible gifts go to the Archbishop's Charitable Fund, which supports a range of causes including Corpus Christi College Building Fund, Priests Retirement Foundation, Melbourne Overseas Mission, John Pierce Centre for the Deaf and the University of Divinity Building Fund, which in turn funds the Catholic Theological College under the tax-deductible gifts.
- Non-deductible gifts support seminarian formation and evangelisation initiatives, which provide life-changing experiences such as World Youth Day and the Australian Catholic Youth Festival, as well as funding university chaplaincy, which invites tertiary students into an encounter with Christ.
- All of these projects are vital for the future of our Church in the Archdiocese of Melbourne, and this campaign is your opportunity to play a part.

## Appendix 5 Altar notices

### ALTAR NOTICE #1 9–10 AUGUST MASSES TO USE AT THE END OF MASS

The Archbishop's Campaign will begin next weekend. I encourage you to think about what a vibrant faith community means for you and your family, and to consider making a personal and recurring monthly gift to support the vital ministries that serve all in our Archdiocese. From next week, you will notice posters and campaign envelopes with tear-off pledge cards around the church, a banner on our website and images supporting the campaign on our social media accounts. More information about this campaign is coming; in the meantime, I encourage you to prayerfully begin discerning your gift.

### ALTAR NOTICE #2 30–31 AUGUST MASSES TO USE AT THE END OF MASS

This is a final reminder to complete your pledges to the 2025 Archbishop's Campaign and play your part in supporting the vital ministries that serve all in our faith community in the Archdiocese of Melbourne. The campaign calls on all the faithful to support our seminary, our retired priests, and important care and evangelisation ministries of the Archdiocese. More details about the campaign and how to make a gift are in the brochures in the pews and foyer today. I know that times are challenging but encourage you to consider giving generously to the extent you are able.



A Word doc file is available at  
[melbournecatholic.org.au/  
archbishops-campaign-resources](https://melbournecatholic.org.au/archbishops-campaign-resources)

# Appendix 6

## Prayer of the faithful

### 16-17 / 23-24 / 30-31 AUGUST MASSES TO USE AT THE END OF MASS

We pray for the vital ministries of our Archdiocese of Melbourne. May they continue to flourish and thrive. We pray for all seminarians, all retired priests and those working in vital ministries. May the Archbishop's Campaign enjoy the generous support of the faithful, and may those who work in our vital ministries—our seminarians and our priests, including those who are now retired but have served your people in the past—be filled with the light of your love.

# Appendix 7

## Bulletin notes

### 16-17 / 23-24 / 30-31 AUGUST MASSES TO USE IN WEEKEND BULLETINS

#### Longer version:

The 2025 Archbishop's Campaign is now underway, and we ask everyone to consider a pledge to support the vital ministries of our Archdiocese. These ministries are outlined in the campaign brochure which you will find in your pew and in the foyer today. Tax-deductible donations go to the Archbishop's Charitable Fund which supports the Corpus Christi College Building Fund, the Priests Retirement Foundation, John Pierce Centre, Melbourne Overseas Mission, the University of Divinity Building Fund as well as Catholic community agencies and service organisations through annual grants. Non-tax-deductible donations go to the Catholic Archdiocese of Melbourne Religious Projects Fund and support seminarian formation and evangelisation ministries. Please review the campaign material and prayerfully consider pledging a recurring monthly gift. Tear-off pledge cards are attached to the campaign envelopes in the church. You can also make a gift online at [melbournecatholic.org/archbishopscampaign](http://melbournecatholic.org/archbishopscampaign) or via the QR codes on the campaign materials.

#### Shorter version:

The 2025 Archbishop's Campaign is now underway, and we ask everyone to consider a one time or monthly pledge to support the vital ministries of our Archdiocese. Brochures with more information can be found around the church. Donations can be made via the QR code, via the supplied campaign envelopes or anonymously via cash directly into the collection plate during the campaign weekends.

### AFTER CAMPAIGN TO USE IN POST- CAMPAIGN WEEKEND BULLETIN

Thank you to everyone who has so generously already made a pledge or gift to the 2025 Archbishop's Campaign. Every gift, large or small, is greatly appreciated! If you are yet to make a gift, you can still do so. This campaign supports the vital ministries of the Church in our Archdiocese. Campaign envelopes with tear-off pledge cards are still available in the church. You can also make a gift online at [melbournecatholic.org/archbishopscampaign](http://melbournecatholic.org/archbishopscampaign). I encourage you to please give generously to the Campaign.



A Word doc file is available at  
[melbournecatholic.org.au/  
archbishopscampaign-resources](http://melbournecatholic.org.au/archbishopscampaign-resources)

# Appendix 8

## ParishID codes

AIR001	Airport West Parish
ALB001	Albion Parish
ALE001	Alexandra Parish
ALP001	Alphington / Thornbury East Parish
ALT002	Altona North Parish
ALT001	Altona Parish
ARM001	Armadale Parish
ASC001	Ascot Vale Parish
ASH001	Ashburton Parish
AVO001	Avondale Heights Parish
BAC001	Bacchus Marsh Parish
BAL001	Balaclava Parish
BAL003	Balwyn North - Kew East Parish
BAL010	Deepdene & Balwyn Parish
BAY001	Bayswater Parish
BEL001	Belgrave Parish
BEL002	Bell Park Parish
BEL003	Belmont Parish
BEN001	Bennettswood Parish
BEN003	Holy Trinity Parish Bentleigh East Parish
BLA002	Blackburn Parish
BLA003	Blackburn North Parish
BLA004	Blackburn South Parish
BLE004	Blessed John Henry Newman Parish
BOR001	Boronia Parish
BOX001	Box Hill Parish
BRI001	Brighton Parish
BRI002	Brighton East Parish
BRO001	Broadmeadows Parish
BRU001	Brunswick Parish / Brunswick East Parish

BRU003	Brunswick North Parish
BRU004	Brunswick West Parish
BUL001	Bulleen Parish
BUN001	Bundoora Parish
BUR001	Burwood Parish
CAM001	Camberwell Parish
CAM002	Camberwell East Parish
CAM003	Camberwell South Parish
CAR001	Caroline Springs Parish
CAS001	Castlemaine Parish
CAU002	Caulfield South Parish
CHE001	Chelsea Parish
CHE002	Cheltenham Parish
CLA001	Clayton Parish
CLA002	Clayton South Parish
CLI003	Clifton Hill & Collingwood Parish
COB001	Coburg Parish
COB002	Coburg East Parish
COR001	Corio Parish
CRA001	Craigieburn Parish
CRO001	Croydon Parish
DAL001	Dallas Parish
DAN001	Dandenong Parish
DAN002	Dandenong North Parish
DEE002	Deer Park Parish
DIA001	Diamond Creek Parish
DON001	Doncaster Parish
DON002	Doncaster East Parish
DON003	Donvale Parish
DOV001	Doveton Parish
DRO001	Dromana Parish
DRY001	Drysdale Parish
ELS001	Elsternwick Parish
ELT001	Eltham Parish
ELW001	Elwood & St. Kilda West Parish
END001	Endeavour Hills Parish
EPP001	Epping Parish
ESS001	Essendon Parish



ESS002	Essendon West Parish
FAW001	Fawkner Parish
FAW002	Fawkner North Parish
FER001	Ferntree Gully Parish
FIT002	Fitzroy North Parish
FIT001	Fitzroy Parish
FLE001	Flemington Parish
FOO001	Footscray Parish
FOR001	Forest Hill Parish
FRA001	Frankston East Parish
FRA002	Frankston Parish
GAR001	Gardenvale Parish
GEE001	Geelong & Geelong East Parish
GIS001	Gisborne Parish
GLA001	Gladstone Park Parish
GLE001	Glen Iris Parish
GLE002	Glen Waverley Parish
GLE003	Glen Waverley North Parish
GLE005	Glenroy Parish
GLE007	Glen Huntly - Caulfield Parish
GRE002	Greensborough North Parish
GRE001	Greensborough Parish
GRE003	Greythorn Parish
GRO001	Grovedale Parish
HAD001	Hadfield Parish
HAM001	Hampton Parish
HAM002	Hampton East Parish
HAM003	Hampton Park Parish
HAW001	Hawthorn Parish
HEA001	Healesville Parish
HEI001	Heidelberg Parish
HEI002	Heidelberg West Parish
HIG001	Highbett Parish
HOP001	Hoppers Crossing Parish
HOP002	Hoppers Crossing North Parish
IVA001	Ivanhoe Parish
JOR001	Jordanville Parish

KEI001	Keilor Downs & Kealba Parish
KEI002	Keilor East Parish
KEN001	Kensington Parish
KEW001	Kew Parish
KEY001	Keysborough Parish
KILO01	Kilmore Parish
STAO03	Kings Park Parish
KIN001	Kingsbury Parish
KIN002	Kingsville Parish
KYN001	Kyneton Parish
LAL001	Lalor Parish
LAN001	Lancefield Parish
LAN002	Langwarrin Parish
LAV001	Laverton Parish
LIL001	Lilydale Parish
MAC001	Macleod Parish
MAI001	Maidstone and Braybrook Parish
MAL001	Malvern Parish
MAL005	Malvern East 1 & 2 Parish
MAN002	Mansfield Parish
MEL001	Melbourne - St Augustines
MEL003	Melbourne North Parish
MEL004	Melbourne South Parish
MEL005	Melbourne West Parish
MEL006	Melbourne East - Cathedral Parish
MEL007	Melton Parish
MEL008	Melton South Parish
MEN001	Mentone / Parkdale East Parish
MER001	Meredith Parish
MER018	Mernda/Whittlesea Parish
MILO01	Mill Park Parish
MIT001	Mitcham Parish
MON001	Montmorency Parish
MOO001	Moonee Ponds Parish
MOO003	Mooroolbark Parish
MOR001	Mordialloc / Aspendale Parish
MOR002	Moreland Parish

MOR003	Mornington Parish
MOU001	Mount Eliza Parish
MOU002	Mount Evelyn Parish
MOU003	Mount Waverley Parish
MUL001	Mulgrave Parish
MUR001	Murrumbeena Parish
NEW001	Newport Spotswood Parish
NID001	Niddrie Parish
NOB001	Noble Park Parish
NOB002	Noble Park North Parish
NOR001	Norlane Parish
NOR002	Northcote Parish
OAK001	Oak Park Parish
OAK002	Oakleigh Parish
OAK003	Oakleigh East Parish
ORM001	Ormond Parish
PAR001	Park Orchards Warrandyte Parish
PAR002	Parkville Parish
PAS002	Pascoe Vale Parish
POR001	Port Melbourne & Middle Park Parish
PRE001	Preston Parish
PRE002	Preston East Parish
PRE003	Preston West Parish
QUE001	Queenscliff Parish
RES001	Reservoir East Parish
RES003	Reservoir North Parish
RIC001	Richmond & Richmond North Parish
RIC003	Ricketts Point Parish
RIN001	Ringwood Parish
RIN002	Ringwood North Parish
ROS001	Rosebud Parish
ROW001	Rowville Parish
SAN001	Sandringham Parish
SCOO01	Scoresby Parish
SEA001	Seaford Parish
SEY001	Seymour Parish

SOR001	Sorrento Parish
SOU001	South Yarra Parish
SPR002	Springvale North Parish
SPR001	Springvale Parish - St Josephs
SPR003	Springvale parish - St Marks
STA001	St Albans Parish
STA002	St Albans South Parish
STK001	St Kilda East Parish
STRO05	Strathmore Parish
SUN001	Sunbury Parish
SUN002	Sunshine Parish
SUN003	Sunshine North Parish
SUN004	Sunshine West Parish
SUR006	Surrey Hills & Wattle Park Parish
SYN001	Syndal Parish
TEM001	Templestowe Parish
THO001	Thomastown West Parish
THO003	Thornbury Parish
TOO001	Toorak Parish
TRE001	Trentham Parish
UPP001	Upper Yarra Parish
WAN001	Wantirna Parish
WER001	Werribee Parish
WES001	Western Port Parish
WHE001	Wheelers Hill Parish
WIL001	Williamstown Parish
WOO001	Woodend Parish
YAR001	Yarraville Parish
YEA001	Yea Parish







For general enquiries, please contact:  
**archbishopsfund@cam.org.au**  
**9926 5686**

Or to contact the coordinator of the Archbishop's Campaign:  
Llew Berchy  
**llewy.berchy@cam.org.au**



CATHOLIC ARCHDIOCESE  
OF MELBOURNE